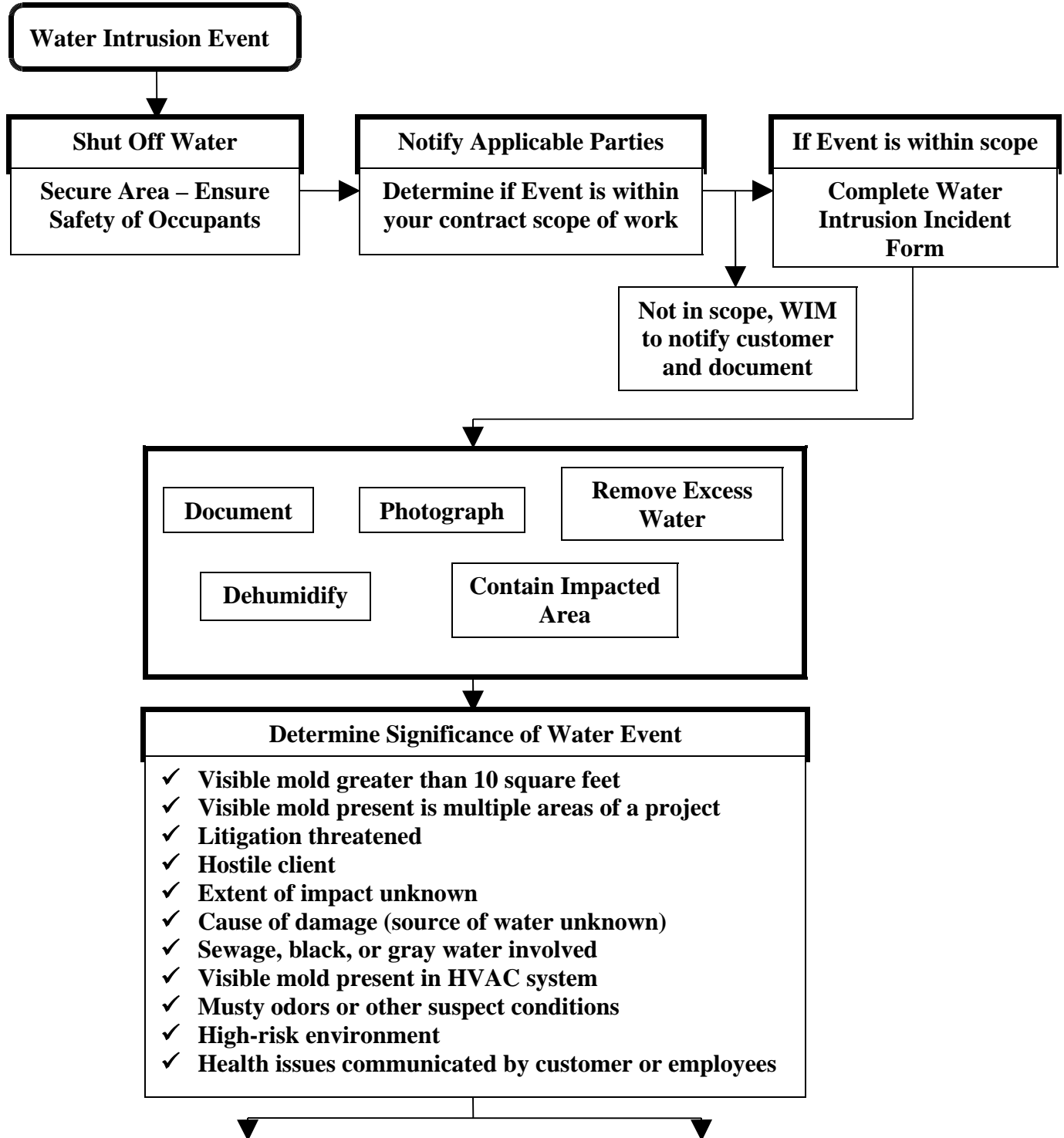
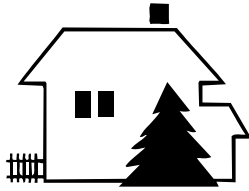


*In Community Management, We're Superior*





SUPERIOR  
COMMUNITY MANAGEMENT  
COMPANY

*In Community Management, We're Superior*

**Insignificant Event Within  
Scope of Contract**

- Dry wet areas
- Extract water and expose concealed areas
- Remove wet building materials if possible
- Consider Post-Remediation Sampling
- Document everything

**Protocol A**

**Significant Event Within Scope of  
Contract**

**Notify customer. Once customer responds WIM may become involved to develop remediation scope and determine if the following are needed**

- Shut down HVAC
- Run negative air machines in contained areas
- Consider occupant relocation
- Do not remove impacted items unless they are contained in poly
- Determine if 3<sup>rd</sup> parties are required
- Determine if testing is required
- Items that have been visually impacted and cannot be cleaned should be discarded
- Contact consultant to run post-remediation samples
- Document everything as required

**Protocol B**